




BIENFANG® Masterpiece® Mechanical Presses

A versatile and dependable press is the centerpiece of a successful framing operation. For the optimum in creative dry mounting and laminating, BIENFANG® Mechanical Presses are without equal. Whether your project involves photos, posters or other artwork, BIENFANG Mechanical Presses let you mount, laminate and apply texture with ease.

550 and 250 Mechanical Press Features

- Designed to consistently provide even heat and uniform pressure – two most important requirements.
- The 550 and 250 have an easy to read digital display with touch pad. 
- Preset programs for Bienfang adhesives and laminates major applications.
- Capable of finishing pieces even larger than the press itself.
- Durable framework, built-to-last construction.
- Easy-to-clean platen surfaces.

- Superior heating quickly brings the platen to uniform temperature ensuring 100% bonding.
- Thermostat control adjusts from 100° to 300°.
- Presses are UL Listed and CUL Approved.

Masterpiece® 550 and Masterpiece® 250 Presses are the most versatile and dependable in the business

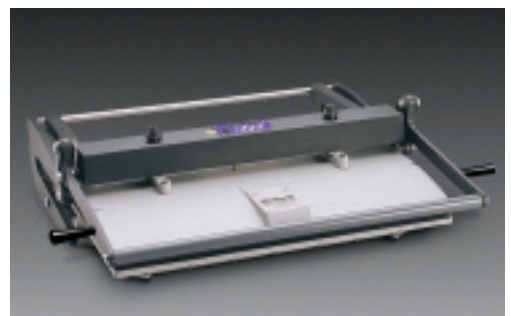
With these two popular presses there's no guesswork when it comes to producing the optimum in creative dry mounting and laminating. They're versatile, dependable and will handle an array of sizes and artistic applications.

Masterpiece® 550

Ideal applications for this press include mounting, laminating and applying texture to large photos, artwork and posters up to 51" (130cm) wide.

When space is at a premium choose the Masterpiece® 250

The quality features engineered into the larger model are also available in a 27" x 25" x 11" compact – with a 10" opening and a working space of 18.5" x 23".



BIENFANG® Masterpiece® Specifications

	550	250	210M (w/o digital control)
Capacity	26 x 34 in. (66 x 86 cm)	18.5 x 23 in. (47 x 58 cm)	18.5 x 23 in. (47 x 58 cm)
	51 in. (130 cm) by any length in sections	36 in. (91 cm) by any length in sections	36 in. (91 cm) by any length in sections
Dimensions	39w x 37d x 12h in.	27w x 23d x 11h in.	27w x 23d x 11h in.
	(99 x 94 x 31 cm)	(69 x 58 x 28 cm)	(69 x 58 x 28 cm)
	20 in. (51 cm) high open	20 in. (51 cm) high open	20 in. (51 cm) high open
Shipping Weight	275 lb. (125 kg)	75 lb. (34 kg)	75 lb. (34 kg)
Power Requirements	120 VAC, 12 Amp	115 VAC, 11.3 Amp	115 VAC, 11.3 Amp
	(230 VAC, 5.8 Amp)*	(230 VAC, 5.7 Amp)*	(230 VAC, 5.7 Amp)*

*International (export) models

All specifications subject to change without notice.

BIENFANG® Masterpiece® Specifications

	160M	110S
Capacity	15.5 x 18.5 in. (39 x 47 cm)	12 x 15 in. (30 x 38 cm)
	30 in. (76 cm) by any length in sections	23 in. (58 cm) by any length in sections
Dimensions	19w x 23d x 11h in.	16w x 19d x 9h in.
	(48 x 58 x 28 cm)	(41 x 48 x 23 cm)
	20 in. (51 cm) high open	17 in. (43 cm) high open
Shipping Weight	60 lb. (27 kg)	38 lb. (17 kg)
Power Requirements	115 VAC, 8.7 Amp	115 VAC, 8.7 Amp

Bienfang Framing Products

A division of Elmer's Products, Inc.
2020 West Front Street
Statesville, NC 28677

Customer Service: 800-873-4868

Technical Service: 888-240-6021

Tech. Fax: 704-871-8671

Hrs: 8:00 a.m.-5:00 p.m. (EST)

www.elmers.com

www.forframersonly.com

©2007 Elmer's Products, Inc.



Equipment, heat-activated Adhesives and Foam Board made in USA.